



Orana and Far Western Region

NSW Agriculture

PO Box 855 DUBBO NSW 2830

Telephone (068) 81 1270

Facsimile (068) 81 1295

Brooks Insulating Paints
Purvis Lane
DUBBO NSW 2830

Dear Sir

SUBJECT: INSULTEC NO.1 AND GLAZE

I have conducted field investigations into the use of your Insultec No.1 sprayed onto bee boxes, lids and bottoms. I have found Insultec No.1 plus a glaze coat to be very suitable for painting bee boxes that are to be used in the arid zone of far western NSW and south western Queensland. The bee boxes have been under test now for three years and one box for six years. The boxes have weathered well and are in very good condition, much better than boxes painted at the same time with other materials.

The glaze has also given the coat of Insultec No.1 greater impact resistance, i.e. the boxes are in contact with each other when being transported to other sites by truck – the honey boxes are transported and handled more often.

The boxes are sprayed through an airless type gun at 3000 psi using a number 21-23 nozzle. The glaze is applied through conventional spray guns, low pressure type.

The bees are kept cooler, 15 – 20⁰ in summer, we spray both the outside and inside of the boxes with Insultec No.1. We sprayed the glaze coat onto the outside and inside of the boxes, lids and bottoms to improve impact resistance. The glaze also helps keep the surface clean as dust is easily removed from the glazed surface. Dust is very difficult to remove from the Insultec surface if glaze is not applied.

The field investigations were conducted at Hungerford, south west Queensland where temperatures are 37⁰ – 46⁰C most of the summer with days up to 50⁰C. the bees showed no stress in the heat, the bees had water supplied to the apiary sites. Hives painted with Insultec No.1 and glaze showed no stress when opened and inspected. Hives painted with other material showed a high degree of stress under extreme heat of 40⁰C and hotter. The Insultec and glaze painted boxes showed no melting of bees wax on top of the bars of frames. All hives painted with other material showed stress also any wax on the top bars of frames had melted.

My conclusion to the field investigations with Insultec No.1 and Glaze is that it is the paint to be used in the arid zone. Because the paint is very thick and forms a protective film when applied to hive material. Insultec will fill small holes and imperfections in hive material.

The hive material is sanded and treated with copper and white sprint dip. This applies to both new and old material to be painted. After copper dipping the hive material is allowed 1 week to dry. The hive material then has the areas that are hard to cover and get to with a spray gun pre painted with a brush to make spraying easier and faster, to paint is allowed a couple of days to dry before spraying.

The prepared hive material is then given a spray coat of Insultec No1 and allowed to dry for a week before off spraying the coat of glaze. The glaze is very easy to apply and a little goes along way. Both Insultec and the Glaze can be applied with brush if desired.

Yours faithfully

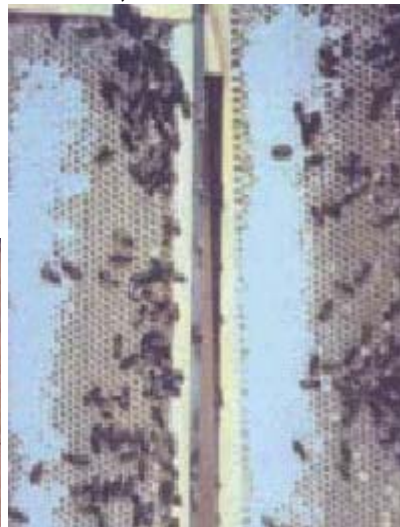


Warren Jones
Senior Livestock Officer (Apiculture)
DUBBO

22 March 1995



Preparation of bee boxes, Pine Creek, Dubbo



Field test site Hungerford, SW Queensland